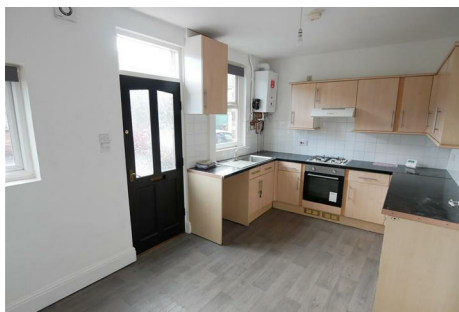


David Moor



10 West View Micklefield, Leeds, LS25 4DG

- Mid through terrace
- Gas central heating
- Modern kitchen
- Close to amenities
- Two bedrooms
- PVC double glazing
- Bathroom with thermostatic shower
- Good public transport

£825 Per Calendar Month

10 West View

Micklefield, Leeds, LS25 4DG

 2

 1

 2

 D

Viewing

Living room

13'8" x 12'9" plus recess (4.17m" x 3.89m" plus recess)

Kitchen Diner

15'11" x 9'5" (4.85m" x 2.87m")

First floor landing

Bedroom1

12'9" x 10'11" plus recess (3.89m" x 3.33m" plus recess)

Bedroom 2

9'3" x 7'11" (2.82m" x 2.41m')

Bathroom

Outside

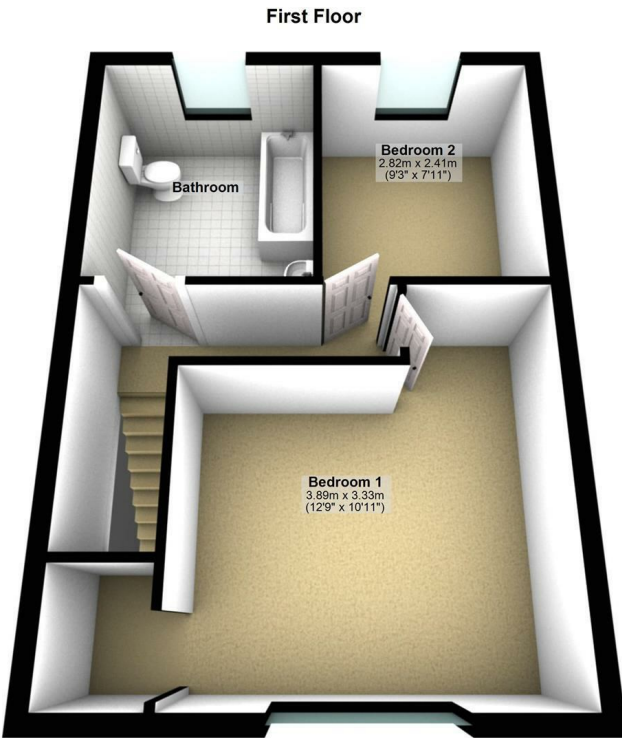
Disclaimer







Floor Plan



These particulars, whilst believed to be accurate are set out as a general outline only for guidance and do not constitute any part of an offer or contract. Intending purchasers should not rely on them as statements of representation of fact, but must satisfy themselves by inspection or otherwise as to their accuracy. No person in this firms employment has the authority to make or give any representation or warranty in respect of the property.

Energy Efficiency Rating		
	Current	Potential
Very energy efficient - lower running costs		
(92 plus) A		
(81-91) B		
(69-80) C		
(55-68) D		
(39-54) E	55	73
(21-38) F		
(1-20) G		
Not energy efficient - higher running costs		
England & Wales		EU Directive 2002/91/EC